



Showroom & Sales Office:
1445 E Grand Avenue, Des Moines, IA 50316
800-670-4537 | www.iaprisoinind.com

Wood Cabinets

Residential-style Wood Cabinets are custom designed and handcrafted by IPI's skilled woodworkers. Combining top quality materials, unmatched craftsmanship, and maintenance-free design, these cabinets are both great looking and long lasting, even in commercial applications.



- Solid red oak facing with tongue-and-groove joints throughout for added strength; other hardwood choices are available upon request
- Interiors constructed from architectural grade super-ply baltic birch
- Drawers feature dovetail joinery in both front and back, baltic birch boxes and high-quality glides for smooth and quiet operation
- European-style concealed hinges provide a modern look
- Choose standard raised or flat panel doors; custom designs also available
- Finish with your choice of countertops
- Multi-coat sealer system provides a durable, waterproof, easy-to-clean finish
- Matching millwork available

Moulding & Millwork

Finish any project with quality Moulding and Millwork that is custom manufactured to your specifications.



- Base moulding, crown moulding, door and window casing, quarter-round and other trim
- Choose unpainted poplar or finished solid red oak

Laminate Cabinets

For high-use situations, commercial-quality Laminate Cabinets are custom designed to fit any space and application. Quality materials and solid construction details ensure these cabinets will hold up to heavy use while looking great at the same time.



- High-pressure laminate or melamine exterior and interior surfaces
- Drawers feature dovetail joinery in both front and back, baltic birch boxes and high-quality glides for smooth and quiet operation
- European-style concealed hinges provide a modern look
- Finish with your choice of countertops



The Order Process

IPI strives to make the Cabinetry order process easy from start to finish. The overall process of ordering cabinets through IPI is as follows:

1. Customer completes the Cabinet Measuring Guide and emails to bryan.koechle@iowa.gov or faxes to 319-372-2856. IPI can also assist with measurements.
2. IPI reviews your plans and prepares initial CAD layout.
3. IPI presents initial CAD layout and rough price estimate to customer.
4. Customer selects options (finish, drawer glides, cabinet styles, etc).
5. IPI makes changes as needed until customer approves CAD layout and price.
6. IPI schedules production and provides estimated delivery timeframe (please allow 12 weeks for production, delivery and installation).
7. IPI schedules delivery and installation 3 to 5 days in advance.

For more information on IPI Cabinets & Millwork, please call 800-670-4537 or visit the IPI website at www.iaprisoinnd.com.

Kitchen

Base Cabinets



Pantry Cabinets



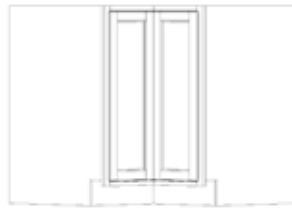
Drawer Bases



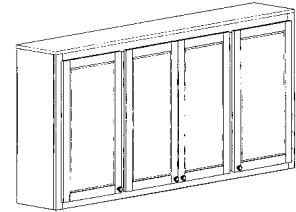
End Caps



Lazy Susans



Wall Cabinets



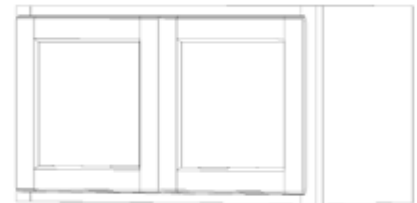
Corner Wall Cabinets



Microwave Cabinets



Short Wall Cabinets



Bathroom

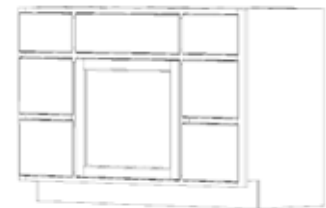
Doors Only



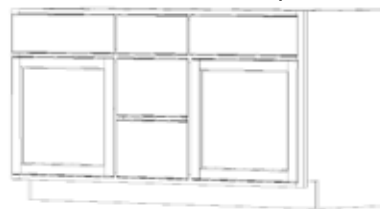
Single Drawer Column



Two Drawer Column



Double Sink Vanity



Linen Cabinet



Showroom & Sales Office:
1445 E Grand Avenue, Des Moines, IA 50316
800-670-4537 | www.iapisonind.com

For more information on IPI Cabinets & Millwork,
please call 800-670-4537 or visit the IPI
website at www.iapisonind.com.