

Iowa Prison Industries Affiliate Ordering Guide: Cabinets and Millwork



Habitat for Humanity of Iowa



Iowa Prison Industries


Iowa Prison Industries (IPI) provides inmates with meaningful work experience and the opportunity to develop valuable skills. As part of the Iowa Department of Corrections, IPI operates manufacturing facilities, farms, and private sector partnerships at eight of Iowa's state prisons.

Iowa Prison Industries receives no appropriation and is 100% self funding. In fact, since 1999, Iowa Prison Industries has returned over \$10 million to Iowa's General Fund and state institutions. Millions more are returned to society in the way of child and family support, victim restitution, income taxes, and inmate savings plans.

Numerous studies have shown that inmates with correctional industries experience have notably lower rates of recidivism. Their ability to find meaningful jobs, along with the values developed working in correctional industries, helps them become productive, law-abiding citizens. These offenders obtain better paying jobs, find work more quickly, and retain jobs longer than inmates without this experience.

Your purchase from Iowa Prison Industries give offenders the opportunity to learn new skills, develop the pride of craftsmanship, and experience the inherent dignity of work.

MISSION STATEMENT



To employ staff and inmates who are dedicated to providing:

- Exceptional Service
- Reasonable Prices
- Quality Products

It is this commitment to excellence that will allow our business to remain self-funding, achieve growth, provide more jobs for inmates and staff and assume a national leadership role in correctional industries.

Vision

By ensuring our mission is achieved, we will have assisted the Department of Corrections in protecting the public, staff, and inmate safety through vital work programs that will ensure the offenders' chances of a successful return to society as tax-paying citizens upon their release.

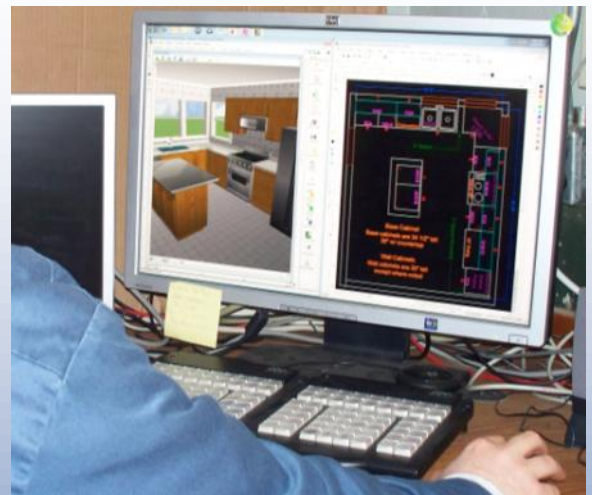
IPI at Fort Madison

Cabinetry for Habitat for Humanity of Iowa has been built at the Iowa State Penitentiary in Fort Madison since 2003, with more than 6,000 cabinets delivered!

Using advanced skills in Computer Assisted Drafting (CAD), woodworking and finishing, offenders can design and build whatever your affiliate needs for its new or rehab housing project.



In addition to cabinets for the kitchen and bath, the Fort Madison operation can also provide matching millwork, as well as coordinating accent furniture such as entertainment centers, kitchen islands, and china cabinets. All are handcrafted to the same high standards, and built to last for generations.



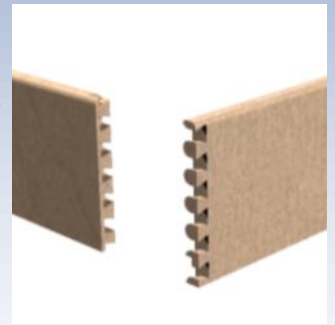
Cabinetry

Cabinets built for Habitat for Humanity of Iowa are custom designed and handcrafted by IPI's skilled woodworkers. Faced in solid red oak, these cabinets utilize Tongue-and-Groove joints throughout for added strength, and interiors constructed from architectural grade super-ply Baltic Birch. Cabinets are available in both flat and raised panel styles.

Drawers features dovetail joinery in both front and back, providing greater strength and durability. Made using the same architectural grade Baltic Birch, the drawers move on high quality glides for a smooth and quiet operation. Full extension glides are also available.

These cabinets are easy to clean and maintain, with a multi-coat sealer system that provides a durable waterproof finish. Four finish colors are available. European style concealed hinges provide a modern look, and allow tool-free installation and removal of doors for easier maintenance.

Combining top quality materials, unmatched craftsmanship, and maintenance-free design, these cabinets will provide the new homeowner with a kitchen and bath that are both great looking and long lasting!



Dovetailed drawer construction



Flat Panel Doors

Raised Panel Doors





Base Cabinets

come in many sizes

Standard height & depths are 34 1/2" x 24"



Drawer Bases

Standard 3 drawers,

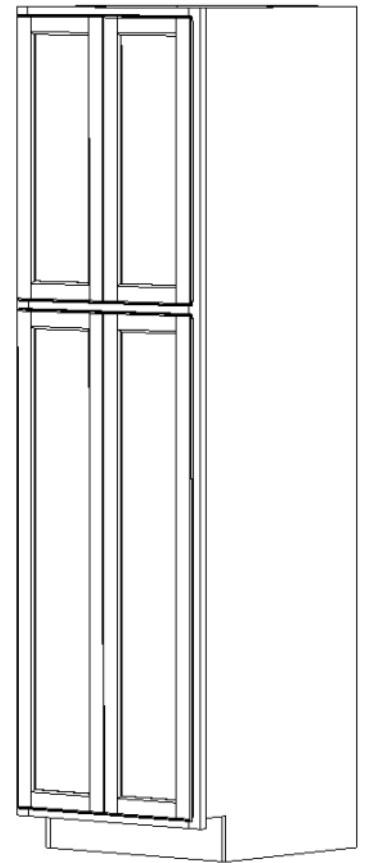
4 drawers also available

or whatever you need

Pantry and Linen Closets

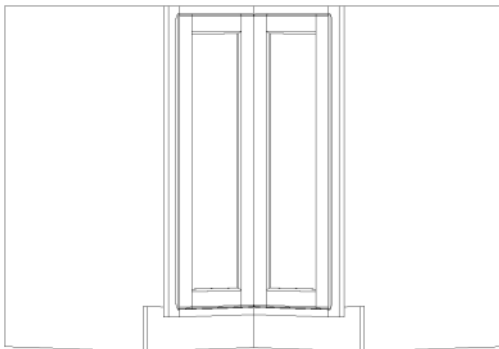
Comes with 1 Adjustable Shelf In the

Upper Area and 3 in the Lower Area



Samples of Cabinets:

We are a custom cabinet shop,
we can build whatever you need.



LS36

36" Lazy Susan with

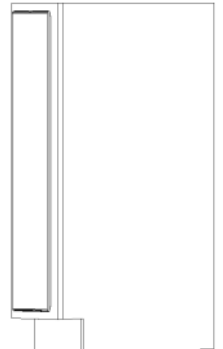
2 adjustable shelves

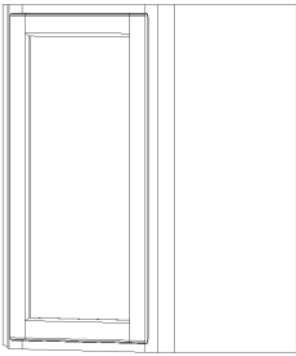
End Caps

End Caps come in a variety
of size and styles to meet your needs.

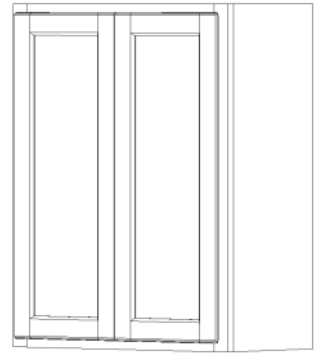
Sample shown is:

6" End Cap w/ False Door

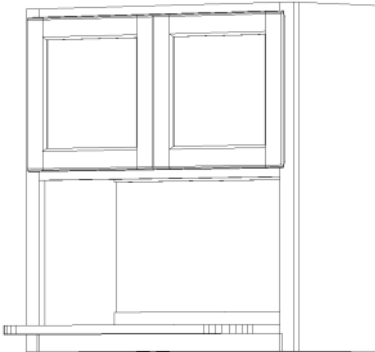




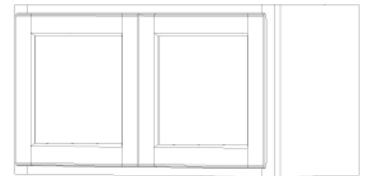
CW24
(2 Fixed shelves)
Corner Wall 24 x 30



Wall Cabinets
come in many sizes to
meet your needs.
(2 adjustable Shelves)



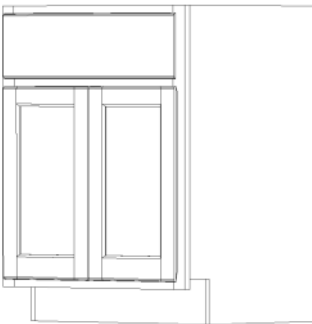
Microwave Cabinets
Customizable to your needs



Short Wall Cabinets
Come in many heights & lengths
To fit above sinks, stoves and refrigerators

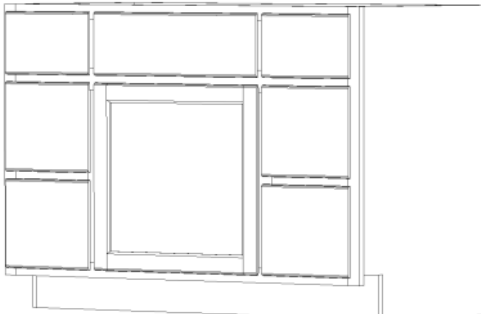
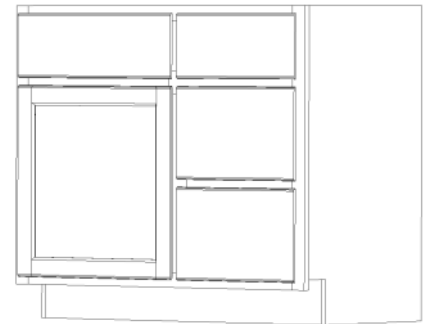
Vanities have several styles and sizes to meet your needs.

Here are a few samples, but there are many to choose from
or we can design one just for you!
Standard height & depths are:
31 1/2" x 21".



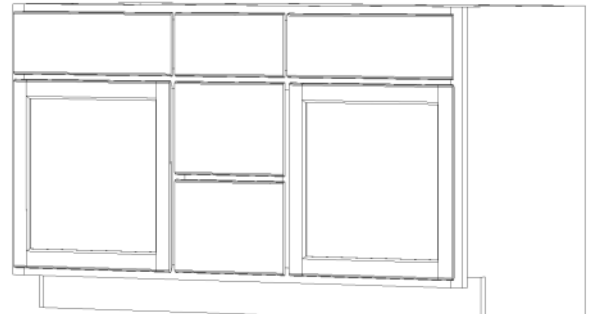
V24

V36



V48

V60
Double Sink



Millwork



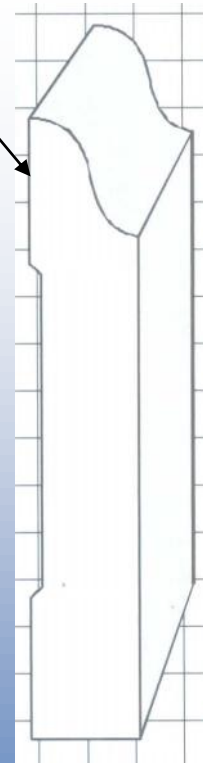
Case, Base, Crown Molding, Quarter Round and other trim can be manufactured and finished to match your cabinets. This trim work is made of poplar or solid red oak, your choice, and finished with the same stain and sealer process as the cabinets.



Base Moulding

Samples

Case Moulding



Standard Case: 2 1/2"
Standard Base: 3 1/4"

Custom Furniture to Match Your Woodwork and Cabinetry

Custom furniture can be made to match your cabinet and millwork finish. These pieces are made to the same exacting standards as our cabinets and are built to last a lifetime! If you want something out of wood to match, ask us and we can do it!



Custom China Hutch



Inside View of
Entertainment Center



Custom Entertainment Center



One of these beautiful child rocking chairs is included with each set of cabinets. Manufactured and upholstered by the IPI craftsmen in Fort Madison, this heirloom piece can be auctioned or raffled off as an affiliate fundraiser, or provided to the new homeowner.

Delivery Fleet

Iowa Prison Industries has its own fleet of trucks, equipped with lift gates and protective dunnage. Our team will work with you to schedule and arrange a delivery that meets your needs.



HOW TO ORDER

It's easy—just contact Iowa Prison Industries, and we will coordinate the design and production of your cabinetry, millwork and any accompanying pieces such as kitchen islands or entertainment centers.

Here's how:

1. Contact IPI with your initial plans 12 weeks before your desired delivery date. (If you don't have 12 weeks, give us a call and we will find a way to help you.)
2. Send us your plans for the kitchen and bath areas. Use the blueprint for the house or other documents showing the overall dimensions of the area, and the location of any doors or windows.
3. The IPI Design Team will review your plans, or even design one for you!
4. When the initial design is ready, IPI will review it with you, and address any questions or concerns. Options such as finish, drawer glides and cabinet styles can be selected, as well as any matching millwork or furniture.
5. Once the design and options are finalized and approved by you, IPI will calculate the cost, schedule the production, and arrange for delivery.
6. Relax. We've designed and built cabinets for affiliates hundreds of times.
7. Call or email us anytime.



Iowa Prison Industries

Habitat Program

1st and Avenue E

Fort Madison, IA 52627

319.372.1908

1.800.382.0019

Fax: 319.372.2856

Email: FMSales@iastind.state.ia.us

